

4

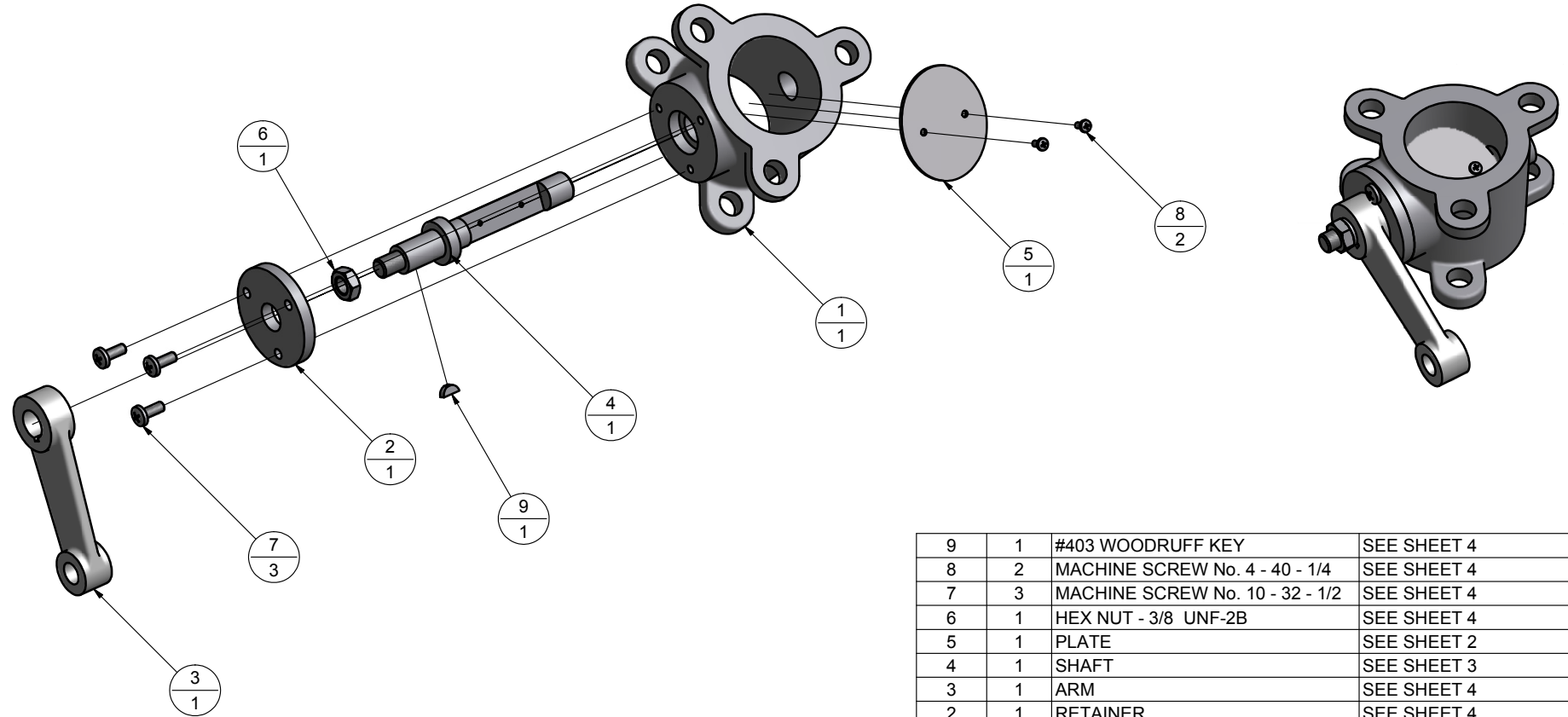
3

2

2

1

REVISION HISTORY				
ZONE	REV	DESCRIPTION	DATE	APPROVED
	1	INITIAL RELEASE	05/04/2011	



ITEM	QTY	PART NUMBER	DESCRIPTION
9	1	#403 WOODRUFF KEY	SEE SHEET 4
8	2	MACHINE SCREW No. 4 - 40 - 1/4	SEE SHEET 4
7	3	MACHINE SCREW No. 10 - 32 - 1/2	SEE SHEET 4
6	1	HEX NUT - 3/8 UNF-2B	SEE SHEET 4
5	1	PLATE	SEE SHEET 2
4	1	SHAFT	SEE SHEET 3
3	1	ARM	SEE SHEET 4
2	1	RETAINER	SEE SHEET 4
1	1	BODY	SEE SHEET 2

Parts List

<p>TOLERANCES: .X + .05 .XX + .02 .XXX + .01 .XXXX + .005 ANGLES ± 1'</p>	<p>UNLESS OTHERWISE NOTED: ALL DIMS IN INCHES & IN- CLUDE CHEM. APPLIED FIN- ISH/PLATING. REMOVE ALL BURRS AND SHARP EDGES. DO NOT SCALE DRAWING.</p>	BUTTERFLY VALVE, ASSY	
		SCALE: 1:2	APPROVED:
		DATE: 05/04/2011	REVISED:
AUSTIN COMMUNITY COLLEGE			
MAT'L: \triangle X		FINISH: \triangle X	DFTG1433.
			SHEET: 1 OF 4

4

3

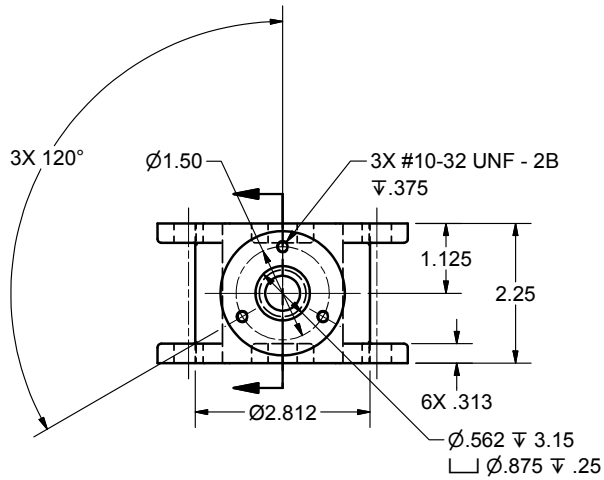
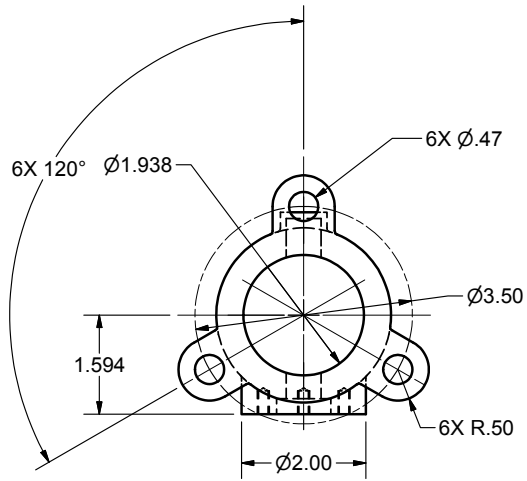
2

2

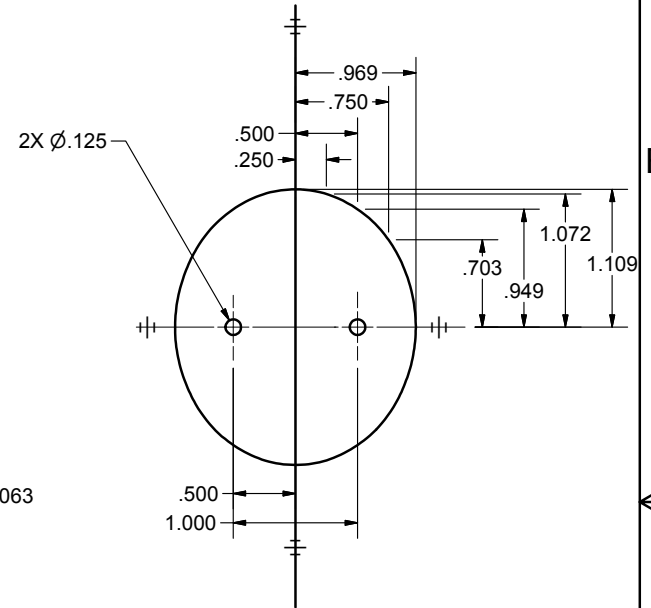
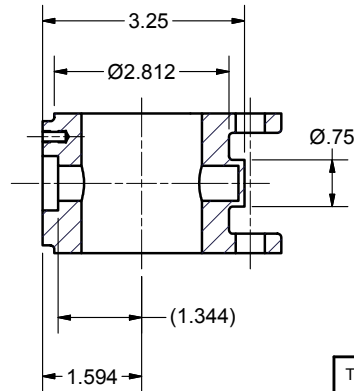
1

1. BODY

- NOTES:
 1. MATERIAL: CAST IRON
 2. FILLETS AND ROUNDS R.063
 3. ONE REQUIRED



SCALE 1/2



SCALE 1 : 1

5. PLATE

- NOTES:
 1. MATERIAL: ALUMINUM 6061
 2. ONE REQUIRED

TOLERANCES: .X + .05 .XX + .02 .XXX + .01 .XXXX + .005 ANGLES ± 1'	UNLESS OTHERWISE NOTED: ALL DIMS IN INCHES & IN- CLUDE CHEM. APPLIED FIN- ISH/PLATING. REMOVE ALL BURRS AND SHARP EDGES. DO NOT SCALE DRAWING.	BUTTERFLY VALVE, DETAILS	
		SCALE: AS NOTED	APPROVED:
		DATE: 05/04/2011	REVISED:
AUSTIN COMMUNITY COLLEGE			
		MAT'L:	FINISH:
		DFTG1433.	SHEET: 2 OF 4

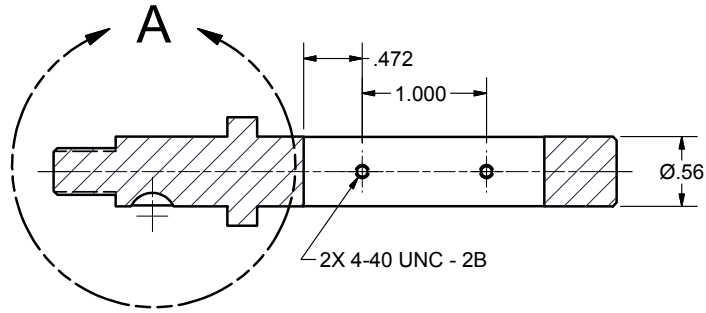
4

3

↓

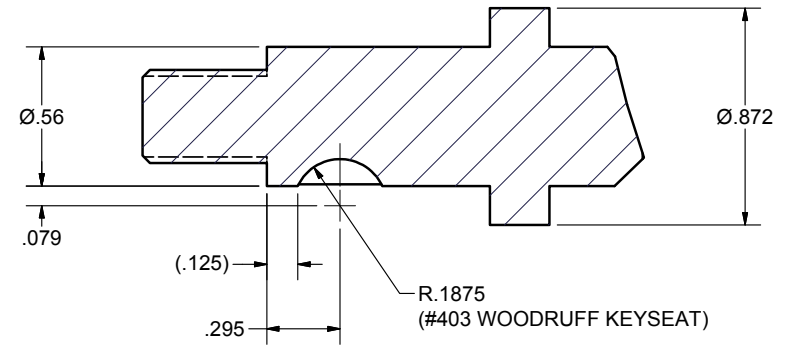
2

1

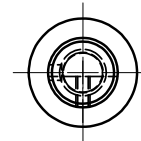
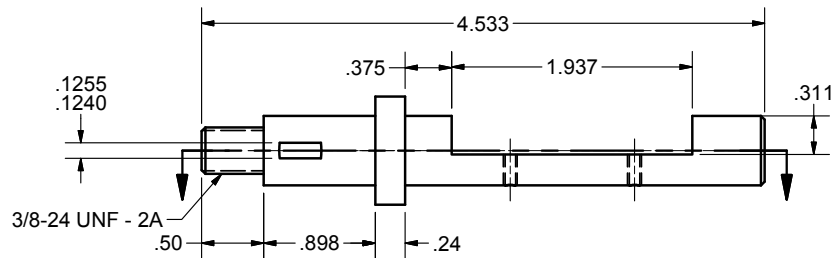


DETAIL A

SCALE 2 : 1



NOTE: KEYSEAT WIDTH TO BE: .1240-.1255



4. SHAFT

- NOTES:
 1. MATERIAL: STEEL
 2. ONE REQUIRED
 3. CHAMFERS $.03X45^\circ$

TOLERANCES: .X $\pm .05$.XX $\pm .02$.XXX $\pm .01$.XXXX $\pm .005$ ANGLES $\pm 1'$	UNLESS OTHERWISE NOTED: ALL DIMS IN INCHES & IN- CLUDE CHEM. APPLIED FIN- ISH/PLATING. REMOVE ALL BURRS AND SHARP EDGES. DO NOT SCALE DRAWING.	BUTTERFLY VALVE, DETAILS	
		SCALE: 1:1	APPROVED:
		DATE: 05/04/2011	DR. BY: F. MORENO REVISED:
		AUSTIN COMMUNITY COLLEGE	
	MAT'L: $\triangle X$	FINISH: $\triangle X$	DFTG1433.
			SHEET: 3 OF 4

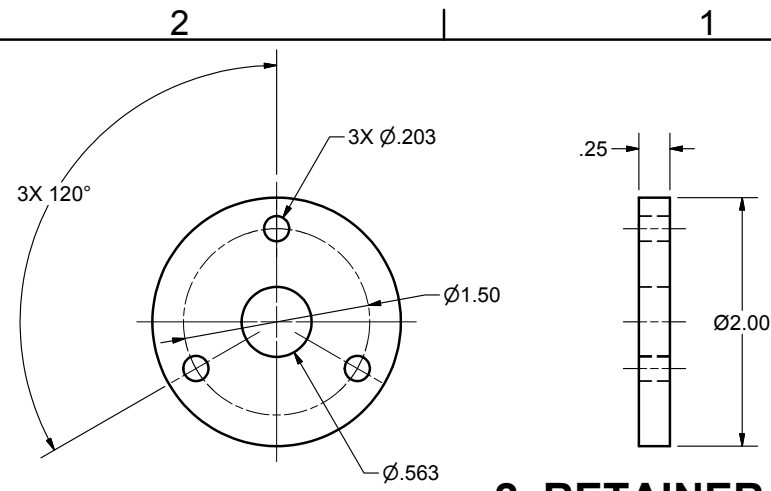
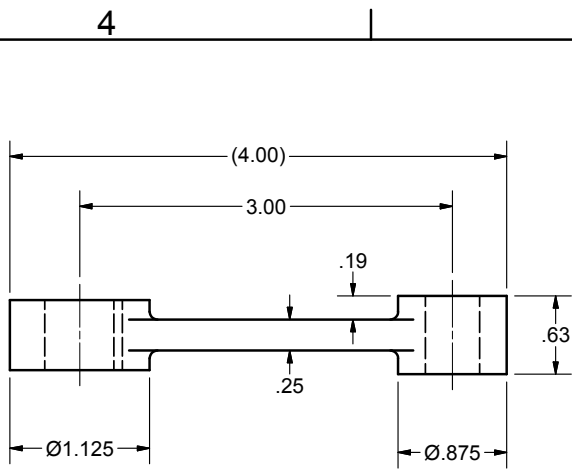
4

3

↑

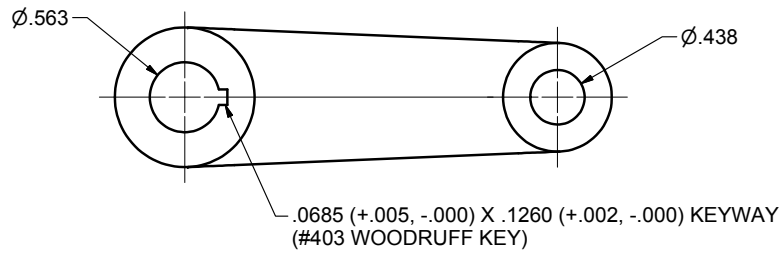
2

1



2. RETAINER

NOTES:
1. MATERIAL: STEEL
2. ONE REQUIRED



3. ARM

NOTES:
1. MATERIAL: STEEL
2. ONE REQUIRED
3. FILLETS AND ROUNDS R.063

6. HEX NUT

NOTES:
1. NORMAL 3/8-24UNF-2B
2. ONE REQUIRED

7. MACHINE SCREW

NOTES:
1. PHILLIPS PAN HEAD 10-32UNF-2A X .50
2. THREE REQUIRED

8. MACHINE SCREW

NOTES:
1. PHILLIPS PAN HEAD, SLOTTED 4-40UNF-2A X .25
2. TWO REQUIRED

9. WOODRUFF KEY

NOTES:
1. #403
2. ONE REQUIRED

TOLERANCES: .X + .05 .XX + .02 .XXX + .01 .XXXX + .005 ANGLES ± 1'	UNLESS OTHERWISE NOTED: ALL DIMS IN INCHES & IN- CLUDE CHEM. APPLIED FIN- ISH/PLATING. REMOVE ALL BURRS AND SHARP EDGES. DO NOT SCALE DRAWING.	BUTTERFLY VALVE, DETAILS	
		SCALE: 1:1	APPROVED:
DATE: 05/09/2011		REVISED:	
AUSTIN COMMUNITY COLLEGE			
MAT'L:		FINISH:	
DFTG1433.		SHEET: 4 OF 4	