

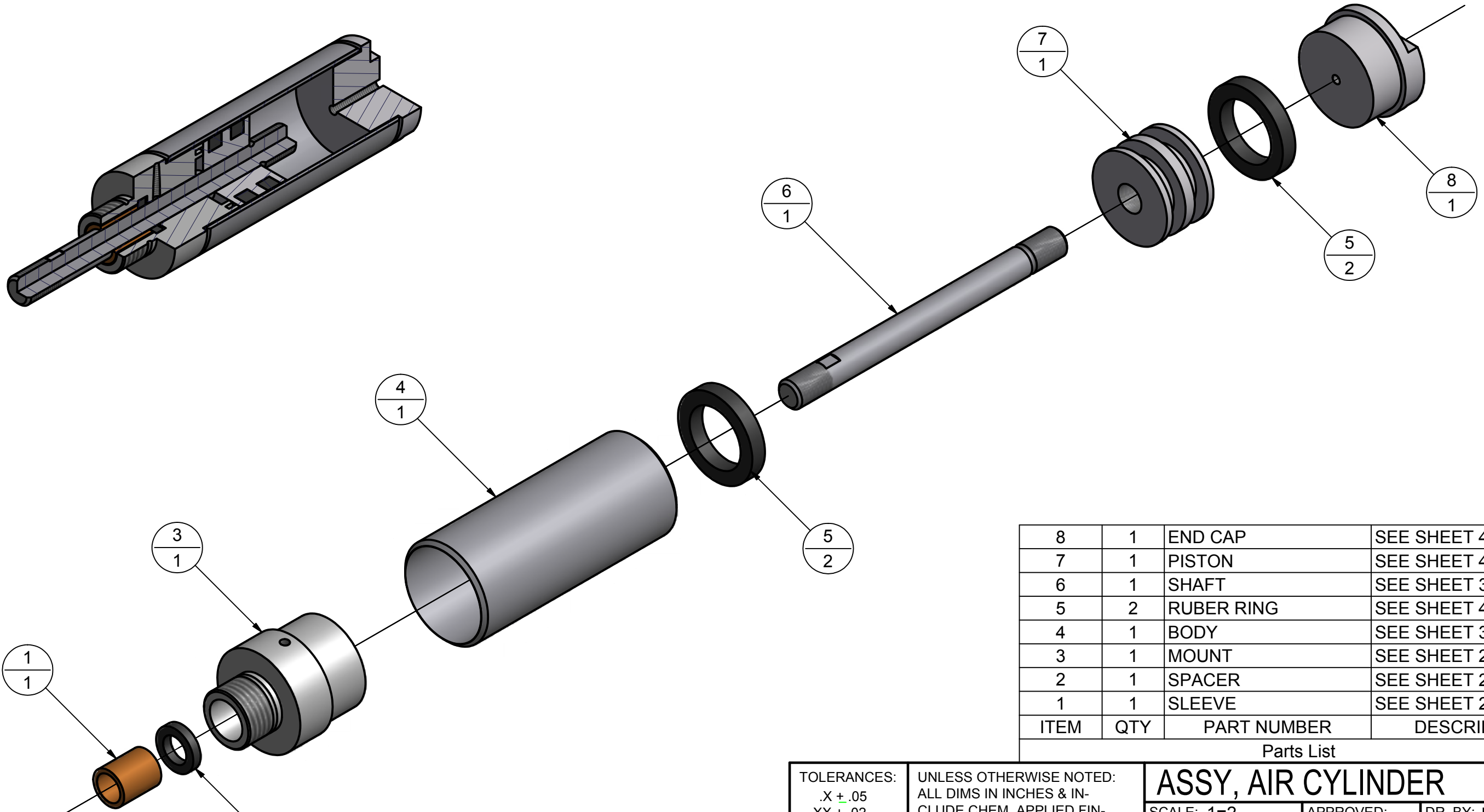
4

3

2

1

REVISION HISTORY				
ZONE	REV	DESCRIPTION	DATE	APPROVED
	1	INITIAL RELEASE	04/20/2011	



8	1	END CAP	SEE SHEET 4
7	1	PISTON	SEE SHEET 4
6	1	SHAFT	SEE SHEET 3
5	2	RUBER RING	SEE SHEET 4
4	1	BODY	SEE SHEET 3
3	1	MOUNT	SEE SHEET 2
2	1	SPACER	SEE SHEET 2
1	1	SLEEVE	SEE SHEET 2
ITEM	QTY	PART NUMBER	DESCRIPTION

Parts List

TOLERANCES: .X ± .05 .XX ± .02 .XXX ± .01 .XXXX ± .005 ANGLES ± 1°		UNLESS OTHERWISE NOTED: ALL DIMS IN INCHES & INCLUDE CHEM. APPLIED FINISH/PLATING. REMOVE ALL BURRS AND SHARP EDGES. DO NOT SCALE DRAWING.		<h2>ASSY, AIR CYLINDER</h2>	
MAT'L:		FINISH:		SCALE: 1=2	APPROVED:
				DATE: 04/20/2011	DR. BY: F.MORENO REVISED:
				<h3>AUSTIN COMMUNITY COLLEGE</h3>	
				DFTG1433.	SHEET: 1 OF 4

4

3

2

1

4

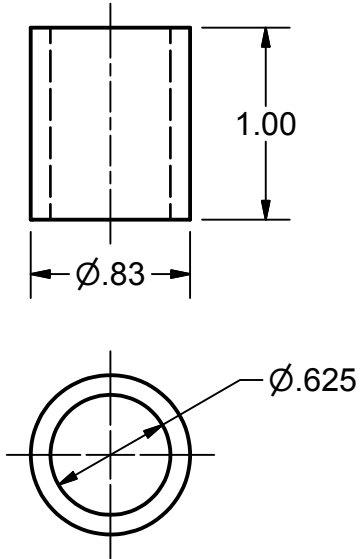
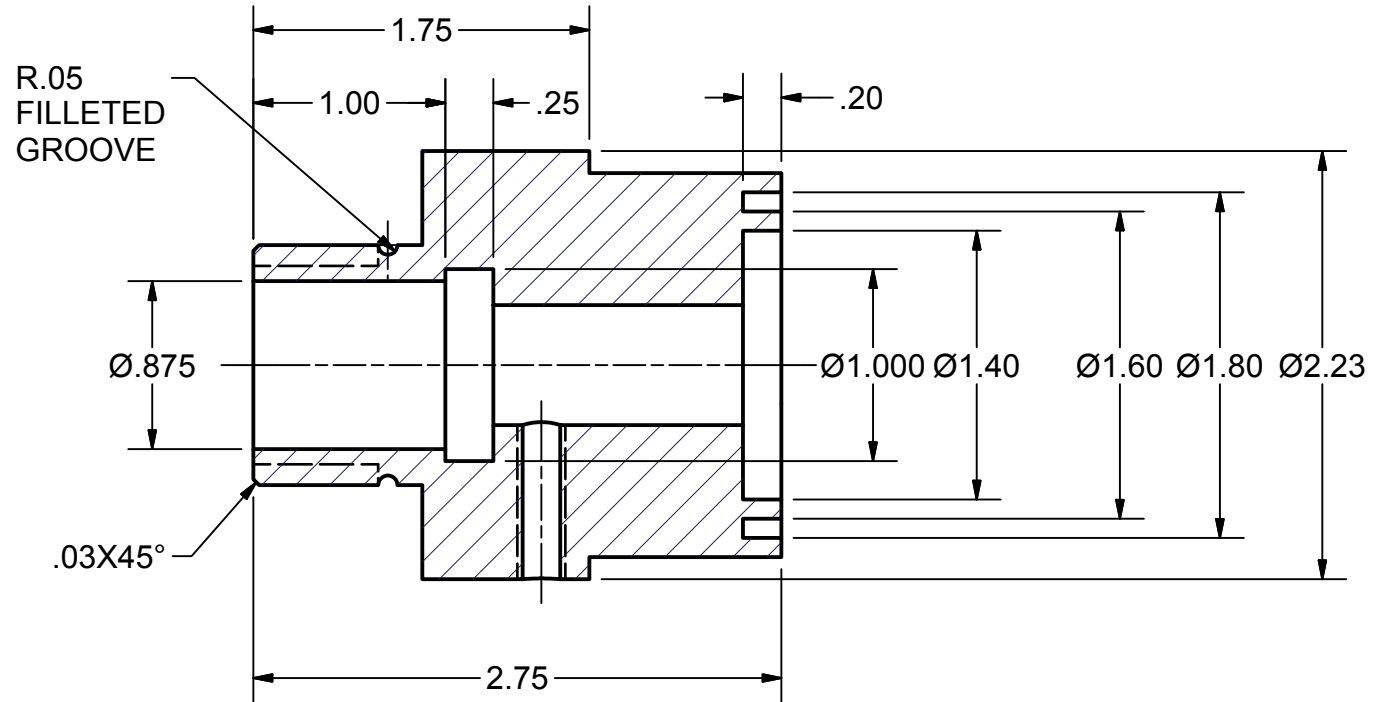
3

2

1

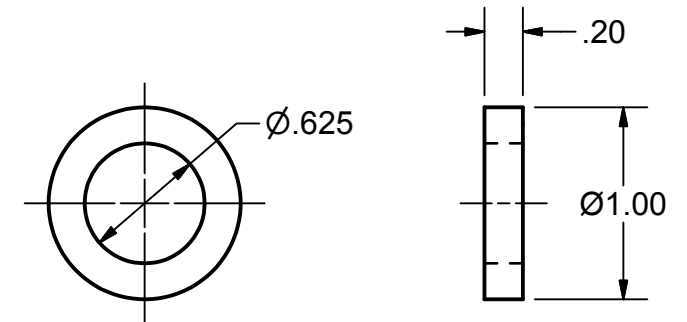
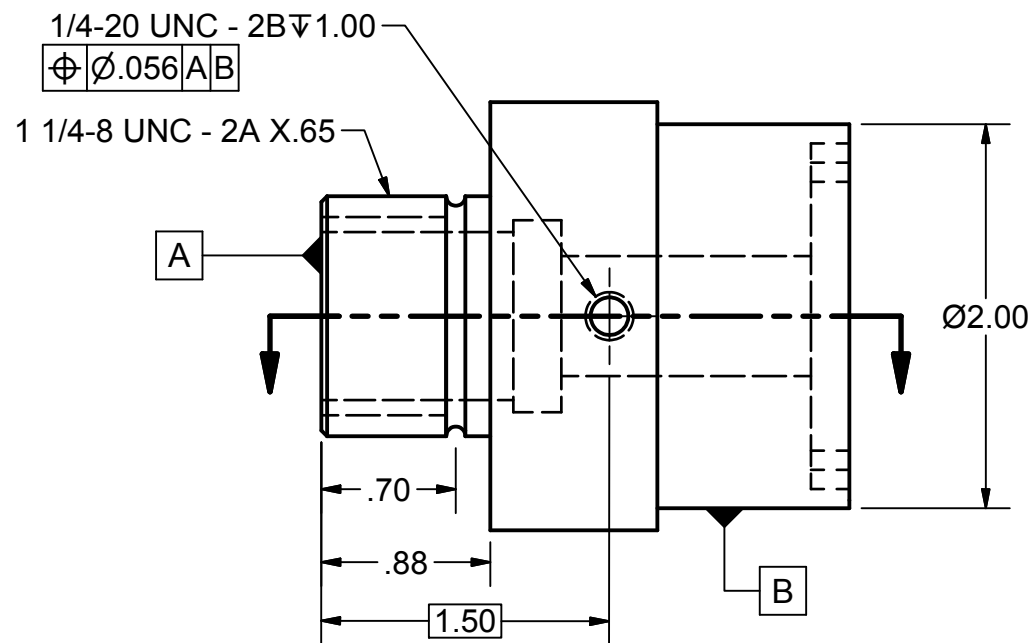
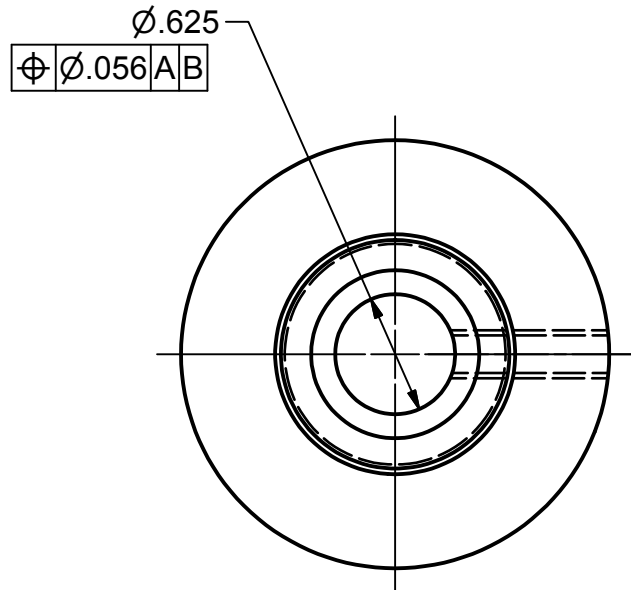
1. MOUNT

NOTES: 1. MATERIAL - ALUMINUM 6061
 2. ONE REQUIRED
 3. SOME HIDDEN LINES OMITTED FOR CLARITY



8. SLEEVE

NOTES: 1. MATERIAL - BRONZE, SOFT TIN
 2. ONE REQUIRED



2. SPACER

NOTES: 1. MATERIAL - RUBBER
 2. ONE REQUIRED

<p>TOLERANCES: .X ± .05 .XX ± .02 .XXX ± .01 .XXXX ± .005 ANGLES ± 1'</p>	<p>UNLESS OTHERWISE NOTED: ALL DIMS IN INCHES & IN- CLUDE CHEM. APPLIED FIN- ISH/PLATING. REMOVE ALL BURRS AND SHARP EDGES. DO NOT SCALE DRAWING.</p>	<p>DETAILS, AIR CYLINDER</p>		
		<p>SCALE: 1=1</p>	<p>APPROVED:</p>	<p>DR. BY: F.MORENO</p>
<p>MAT'L: </p>		<p>FINISH: </p>	<p>DATE: 04/20/2011</p>	<p>REVISED:</p>
<p>AUSTIN COMMUNITY COLLEGE</p>		<p>DFTG1433.</p>	<p>SHEET: 2 OF 4</p>	

4

3

2

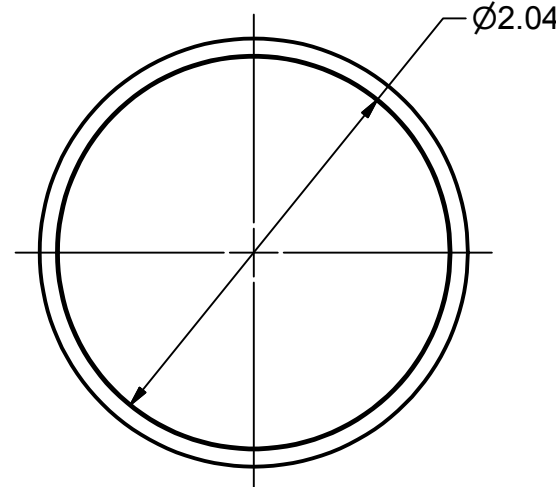
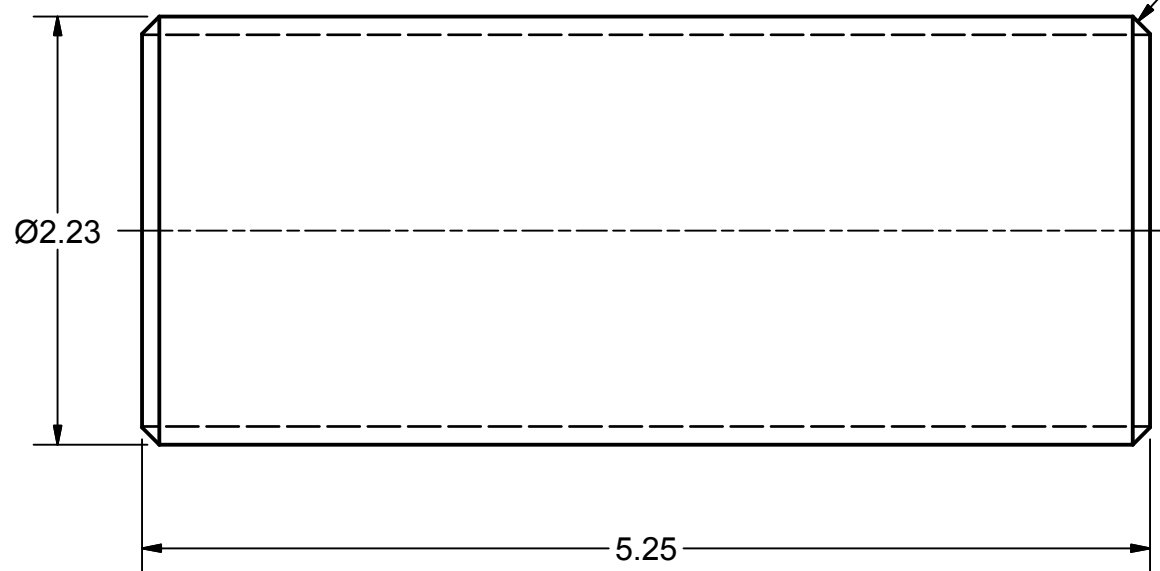
1

4

3

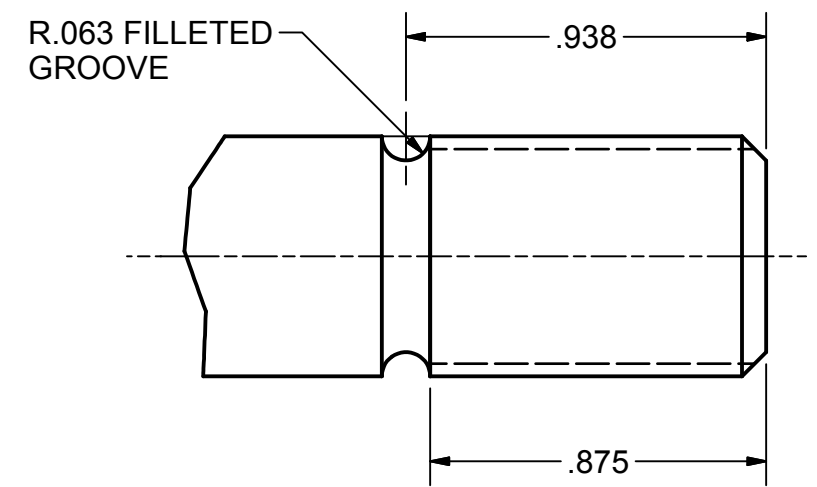
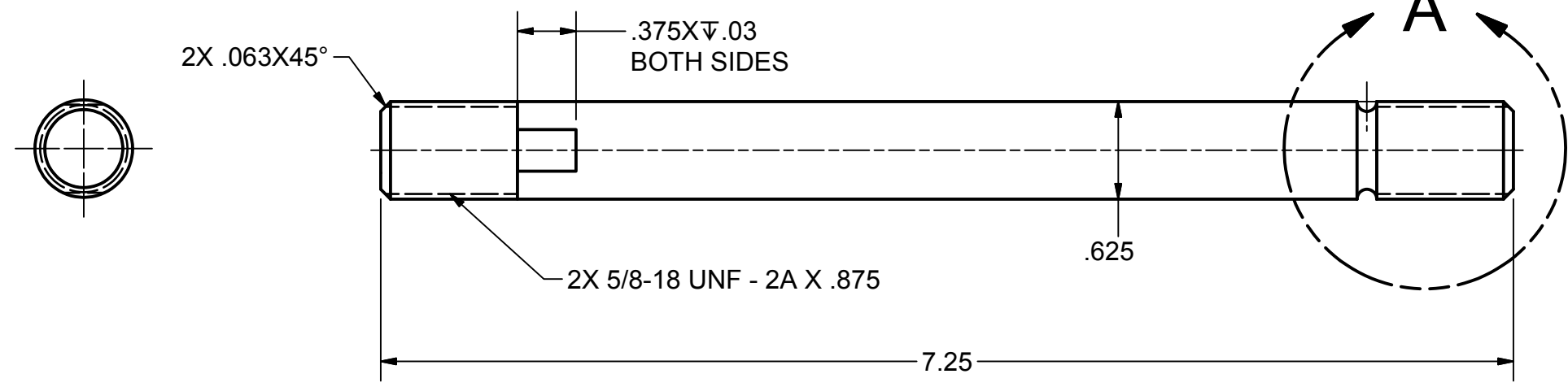
2

1



4. BODY

NOTES: 1. MATERIAL - MILD STEEL
2. ONE REQUIRED



DETAIL A

SCALE 2 = 1

3. SHAFT

NOTES: 1. MATERIAL - MILD STEEL
2. ONE REQUIRED
3. U.O.S. ALL CHAMFERS .063 X 45°

TOLERANCES: .X ± .05 .XX ± .02 .XXX ± .01 .XXXX ± .005 ANGLES ± 1'	UNLESS OTHERWISE NOTED: ALL DIMS IN INCHES & IN- CLUDE CHEM. APPLIED FIN- ISH/PLATING. REMOVE ALL BURRS AND SHARP EDGES. DO NOT SCALE DRAWING.	DETAILS, AIR CYLINDER	
		SCALE: 1=1	APPROVED:
		DATE: 04/20/2011	REVISED:
AUSTIN COMMUNITY COLLEGE			
MAT'L:		FINISH:	DFTG1433.
			SHEET: 3 OF 4

4

3

2

1

4

3

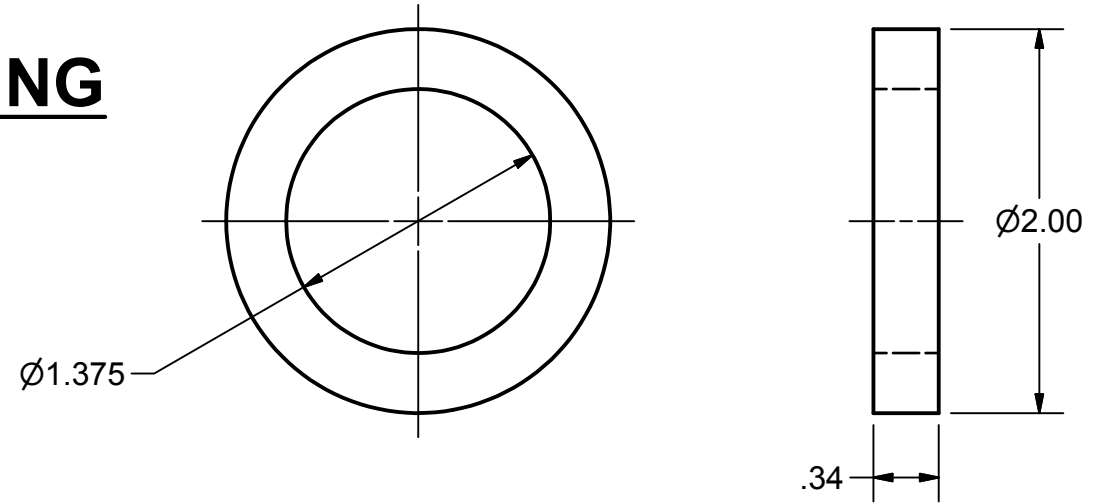
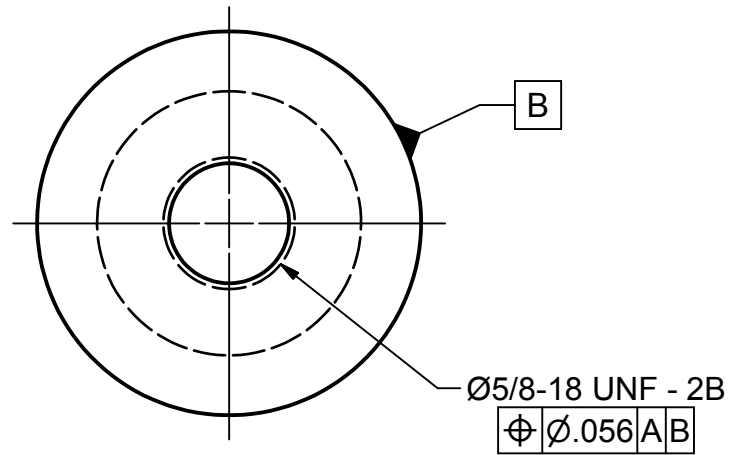
↓

2

1

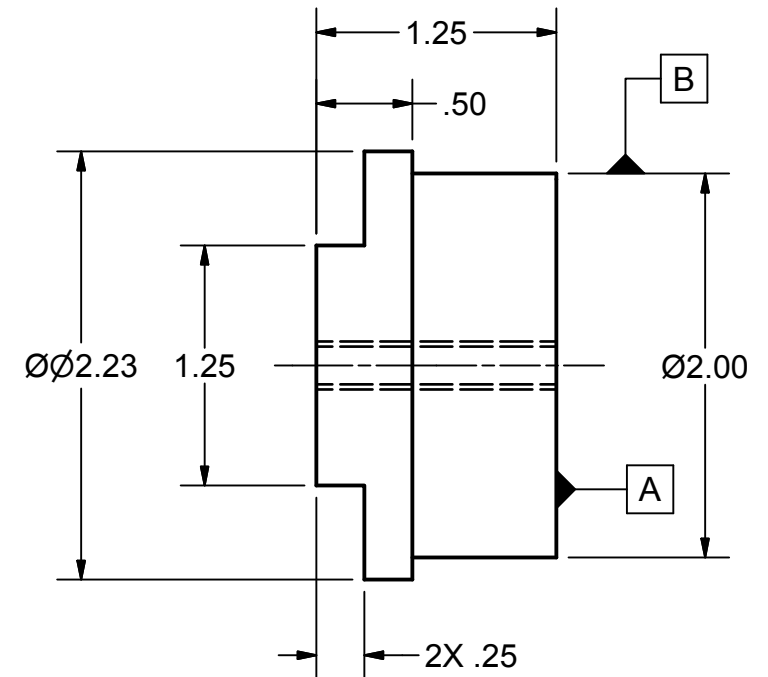
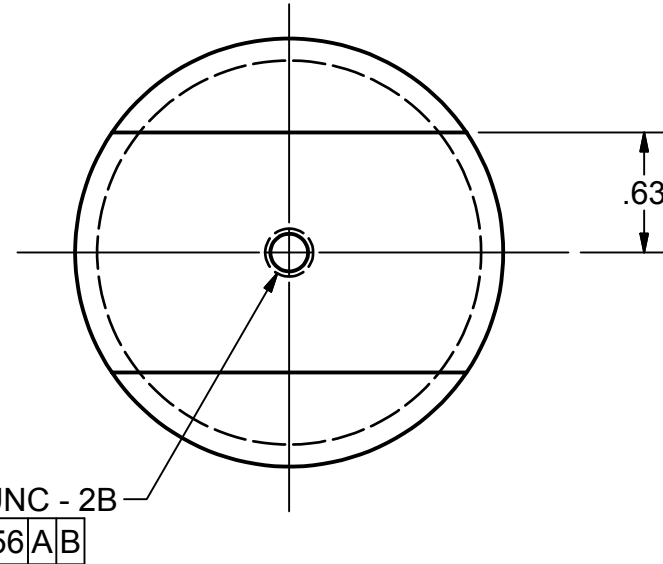
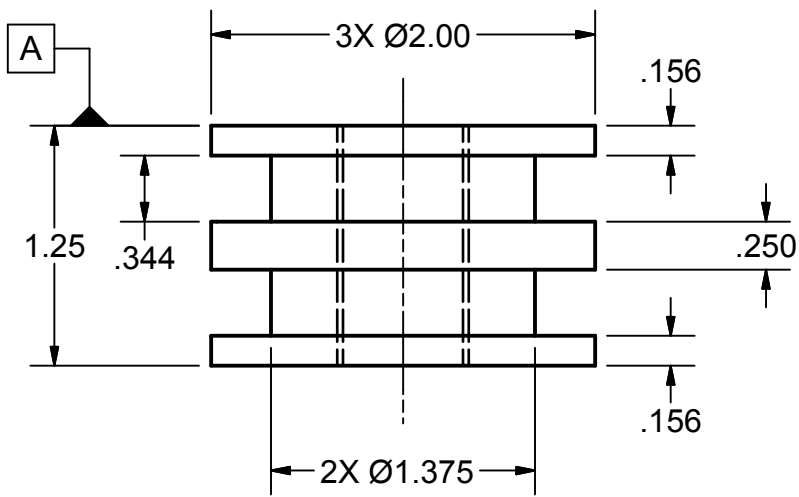
6. RUBBER RING

NOTES: 1. MATERIAL - RUBBER
2. TWO REQUIRED



7. END CAP

NOTES: 1. MATERIAL - ALUMINUM 6061
2. ONE REQUIRED



6. PISTON

NOTES: 1. MATERIAL - ALUMINUM 6061
2. ONE REQUIRED

<p>TOLERANCES:</p> <p>.X ± .05 .XX ± .02 .XXX ± .01 .XXXX ± .005 ANGLES ± 1'</p>	<p>UNLESS OTHERWISE NOTED: ALL DIMS IN INCHES & IN- CLUDE CHEM. APPLIED FIN- ISH/PLATING. REMOVE ALL BURRS AND SHARP EDGES. DO NOT SCALE DRAWING.</p>	DETAILS, AIR CYLINDER	
		<p>SCALE: 1 = 1</p>	<p>APPROVED:</p>
		<p>DATE: 04/20/2011</p>	<p>REVISED:</p>
AUSTIN COMMUNITY COLLEGE			
<p>MAT'L: </p>		<p>FINISH: </p>	<p>DFTG1433.</p>
			<p>SHEET: 4 OF 4</p>

4

3

↓

2

1