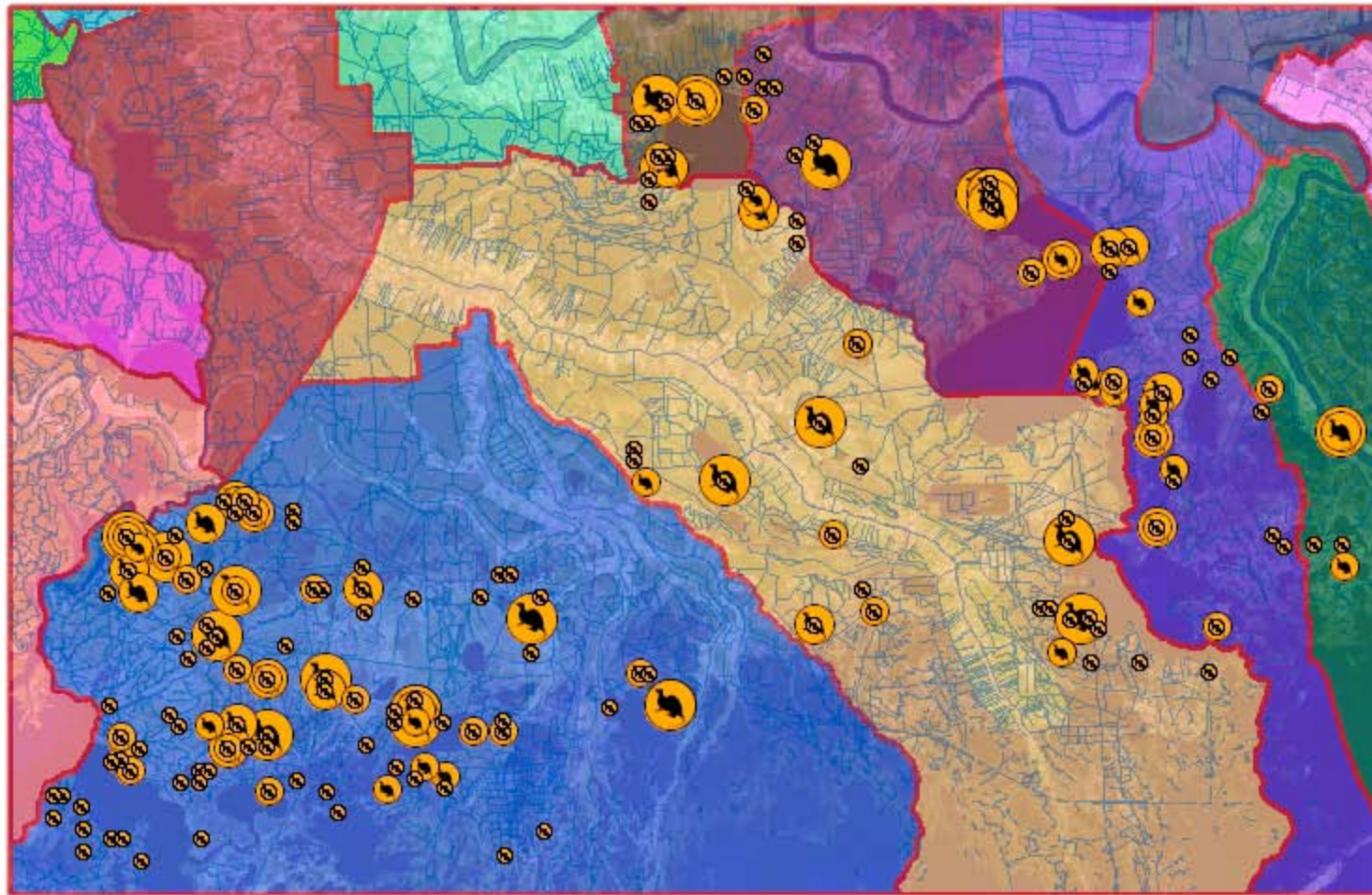


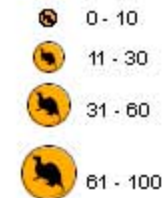
# STUDY AREA, SPATIAL DISTRIBUTION OF NUTRIAS, PARISH AREAS, AIR PHOTO AND HYDROGRAPHY

Zone of Study: Louisiana  
 Nutria: Semi-aquatic rodent introduced to Louisiana in 1937.

353 nutria sites considered for the spatial distribution



## SPATIAL DISTRIBUTION OF NUTRIAS



— Rivers

## Parish in the study area

