

MORENO RANCH

STATE OF TEXAS
COUNTY OF TRAVIS

KNOW ALL MEN BY THESE PRESENTS THAT I, FRANCIS MORENO, OWNER OF THAT CERTAIN 25.42 ACRE TRACT CONVEYED TO ME IN VOLUME 123, PAGE 456, OF THE DEED RECORDS OF TRAVIS COUNTY, TEXAS, DO HEREBY SUBDIVIDE 25.42 ACRES OF SAID TRACT IN ACCORDANCE WITH THE ATTACHED PLAT, TO BE KNOWN AS MORENO RANCH SUBDIVISION, SECTION 2, AND DEDICATED TO THE PUBLIC USE, THE STREETS AND EASEMENTS SHOWN THEREON.

F. MORENO

02/11/2011

Parcel Line Table

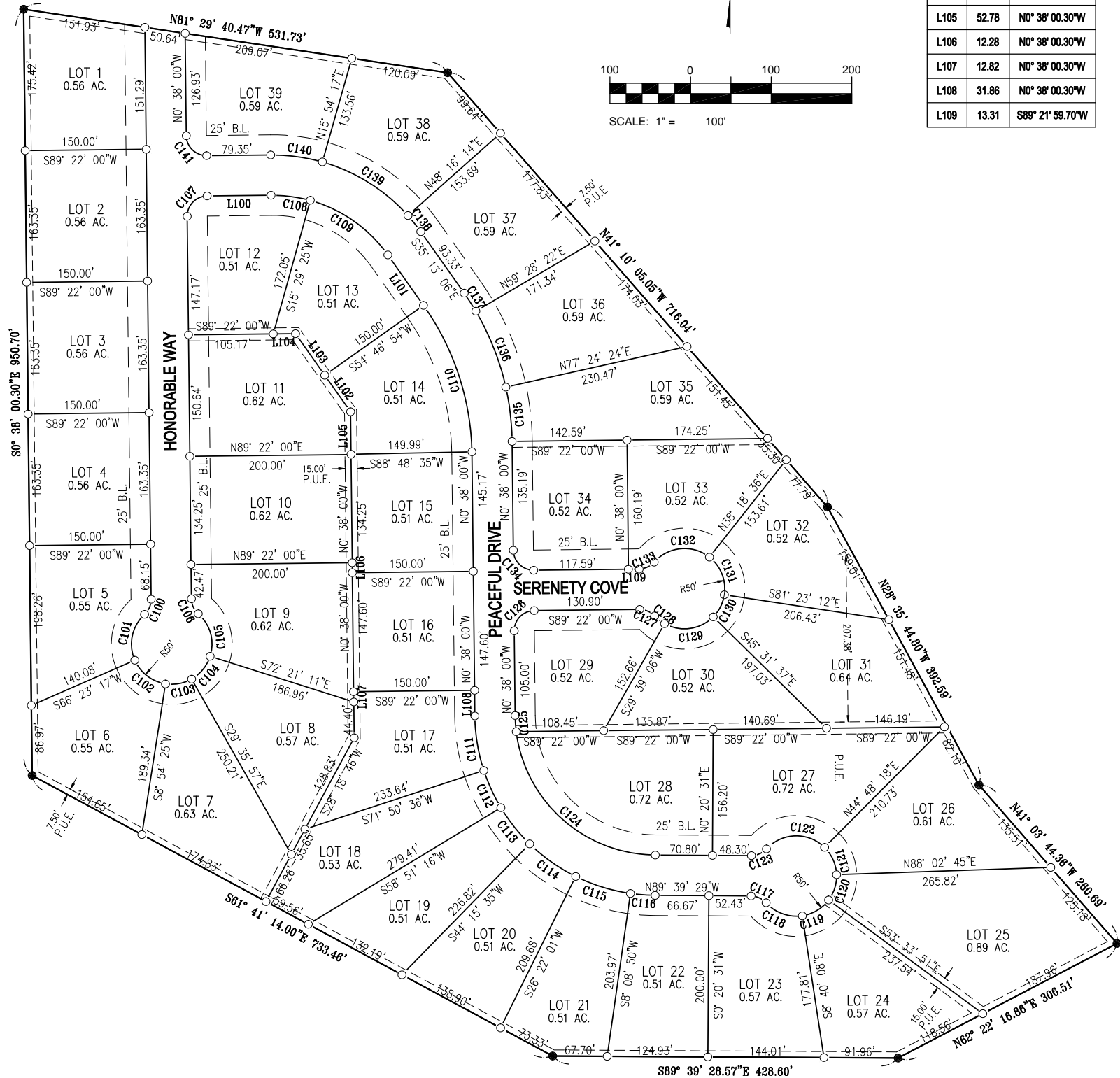
Line #	Length	Direction
L100	79.35	S89° 21' 59.70"W
L101	76.70	S35° 13' 06.00"E
L102	55.54	S35° 13' 06.00"E
L103	62.91	S35° 13' 06.00"E
L104	27.59	S89° 21' 59.70"W
L105	52.78	N0° 38' 00.30"W
L106	12.28	N0° 38' 00.30"W
L107	12.82	N0° 38' 00.30"W
L108	31.86	N0° 38' 00.30"W
L109	13.31	S89° 21' 59.70"W

CURVE TABLE

CURVE	DELTA	RADIUS	LENGTH	TANGENT	CHORD BEARING	CHORD DIST.
C100	48°11'23"	25.00'	21.03'	11.18	N 23°27'41" E	20.41'
C101	71°10'06"	50.00'	62.11'	35.78	S 11°58'20" W	58.19'
C102	57°28'51"	50.00'	50.16'	27.42	S 52°21'09" E	48.08'
C103	38°30'22"	50.00'	33.60'	17.46	N 79°39'14" E	32.97'
C104	42°45'14"	50.00'	37.31'	19.57	N 39°01'26" E	36.45'
C105	66°28'12"	50.00'	58.01'	32.76	N 15°35'17" W	54.81'
C106	48°11'23"	25.00'	21.03'	11.18	S 24°43'42" E	20.41'
C107	90°00'00"	25.00'	39.27'	25.00	S 44°22'00" W	35.36'
C108	16°07'24"	175.00'	49.25'	24.79	N 82°34'17" W	49.08'
C109	39°17'29"	175.00'	120.01'	62.47	N 54°51'51" W	117.67'
C110	34°01'41"	325.00'	193.02'	99.45	N 18°12'16" W	190.19'
C111	17°31'24"	225.00'	68.81'	34.68	S 9°23'42" E	68.55'
C112	12°59'19"	225.00'	51.01'	25.61	S 24°39'04" E	50.90'
C113	14°35'41"	225.00'	57.31'	28.81	S 38°28'34" E	57.16'
C114	17°53'35"	225.00'	70.27'	35.42	S 54°41'12" E	69.98'
C115	18°13'11"	225.00'	71.55'	36.08	S 72°44'35" E	71.25'
C116	7°48'18"	225.00'	30.65'	15.35	S 85°45'20" E	30.63'
C117	48°11'23"	25.00'	21.03'	11.18	N 65°33'47" W	20.41'
C118	57°12'03"	50.00'	49.92'	27.26	S 70°04'07" E	47.87'
C119	44°53'42"	50.00'	39.18'	20.66	N 58°53'00" E	38.18'
C120	38°23'24"	50.00'	33.50'	17.41	N 17°14'27" E	32.88'
C121	43°14'28"	50.00'	37.73'	19.82	N 23°34'29" W	36.85'
C122	92°39'09"	50.00'	80.85'	52.37	S 88°28'43" W	72.33'
C123	48°11'23"	25.00'	21.03'	11.18	N 66°14'50" E	20.41'
C124	82°27'44"	175.00'	251.87'	153.37	S 48°25'37" E	230.68'
C125	6°33'45"	175.00'	20.04'	10.03	S 3°54'53" E	20.03'
C126	90°00'00"	25.00'	39.27'	25.00	S 44°22'00" W	35.36'
C127	48°11'23"	25.00'	21.03'	11.18	N 66°32'19" W	20.41'
C128	17°54'17"	50.00'	15.62'	7.88	S 51°23'46" E	15.56'
C129	75°10'43"	50.00'	65.61'	38.49	N 82°03'44" E	61.00'
C130	35°51'35"	50.00'	31.29'	16.18	N 26°32'35" E	30.79'
C131	60°18'12"	50.00'	52.62'	29.04	N 21°32'18" W	50.23'
C132	87°07'59"	50.00'	76.04'	47.56	S 84°44'36" W	68.92'
C133	48°11'23"	25.00'	21.03'	11.18	N 65°16'18" E	20.41'
C134	90°00'00"	25.00'	39.27'	25.00	S 45°38'00" E	35.36'
C135	11°57'36"	325.00'	67.84'	34.04	N 6°36'48" W	67.72'
C136	17°56'02"	325.00'	101.73'	51.28	N 21°33'37" W	101.31'
C137	4°41'28"	325.00'	26.61'	13.31	N 32°52'22" W	26.60'
C138	6°30'40"	225.00'	25.57'	12.80	N 38°28'26" W	25.56'
C139	32°21'57"	225.00'	127.10'	65.30	N 57°54'45" W	125.42'
C140	16°32'17"	225.00'	64.94'	32.70	N 82°21'51" W	64.72'
C141	90°00'00"	25.00'	39.27'	25.00	S 45°38'00" E	35.36'

LEGEND

- IRON ROD FOUND
- IRON ROD SET



PRODUCED BY AN AUTODESK EDUCATIONAL PRODUCT

DRAWN BY:
F. MORENO

CHECKED BY:
A. INSTRUCTOR

SUBDIVISION PLAT
MORENO RANCH

AUSTIN COMMUNITY COLLEGE - DFTG 2421 TOPOGRAPHICAL DRAFTING

PRODUCED BY AN AUTODESK EDUCATIONAL PRODUCT

SHEET
1 of 1